

**Three
years later**

One

year later

**Six
months
later**

The image features a black rectangular border enclosing a composition of jagged, overlapping shapes. On the left, a large blue shape points towards the center. On the right, a large pink shape points towards the center. The background within the border is white. The text 'Divorced' is written in a bold, black, sans-serif font, with 'Divor' on the blue shape and 'ced' on the pink shape.

Divor

ced

**In the
same
month!!!**

**Seven
months
later**

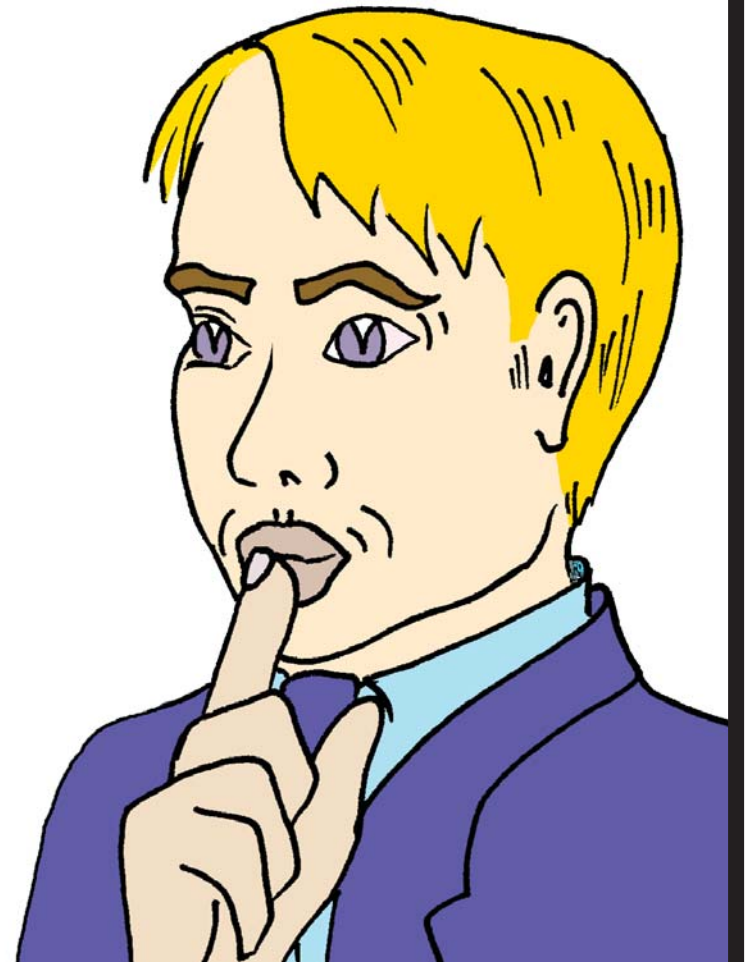
**Four
years
later**

**Two
years
later**

Catherine

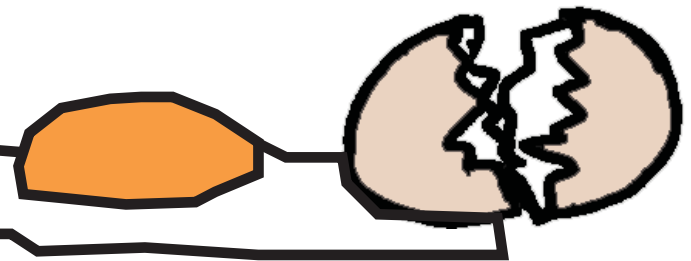
Parr

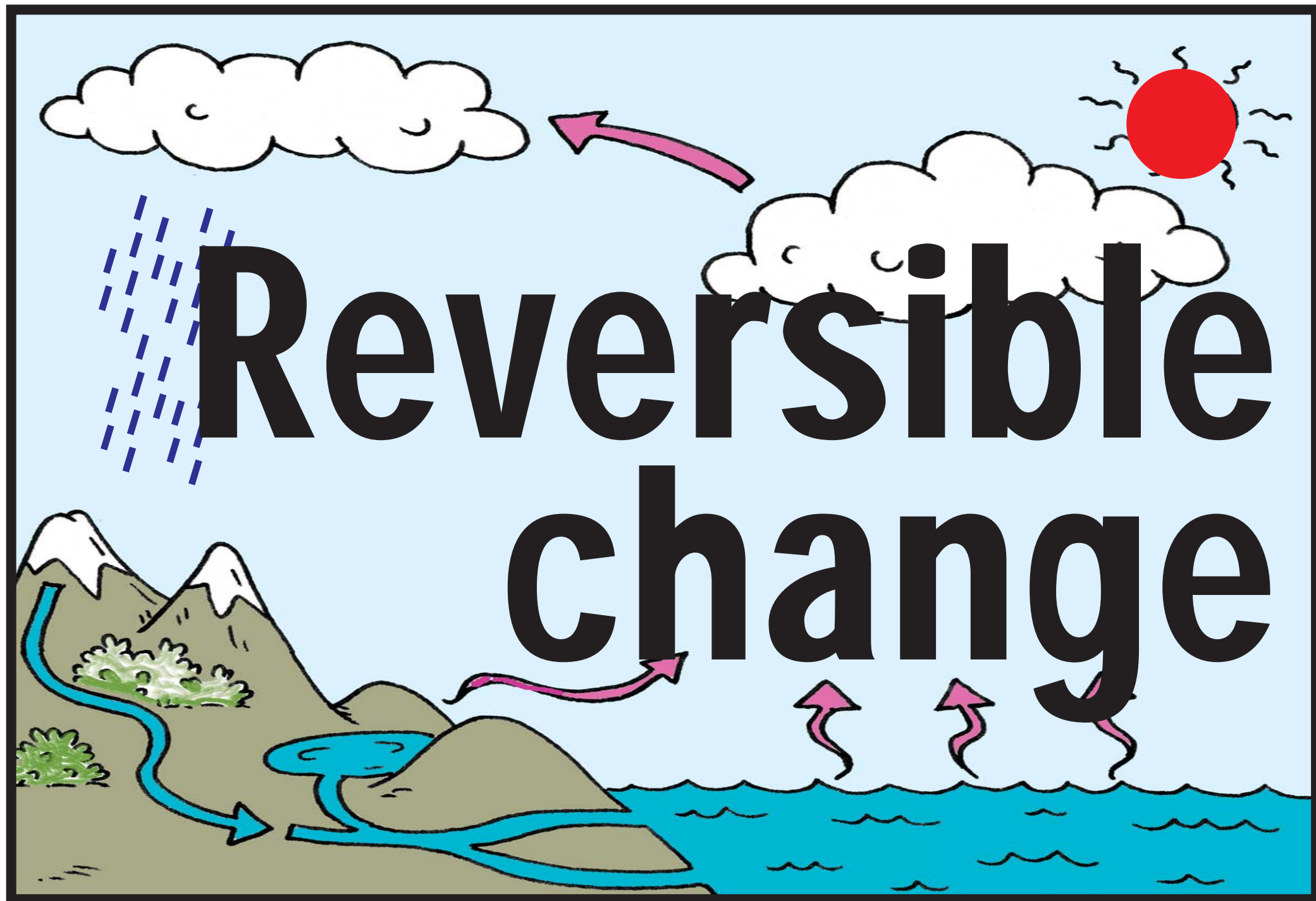
SATs in progress

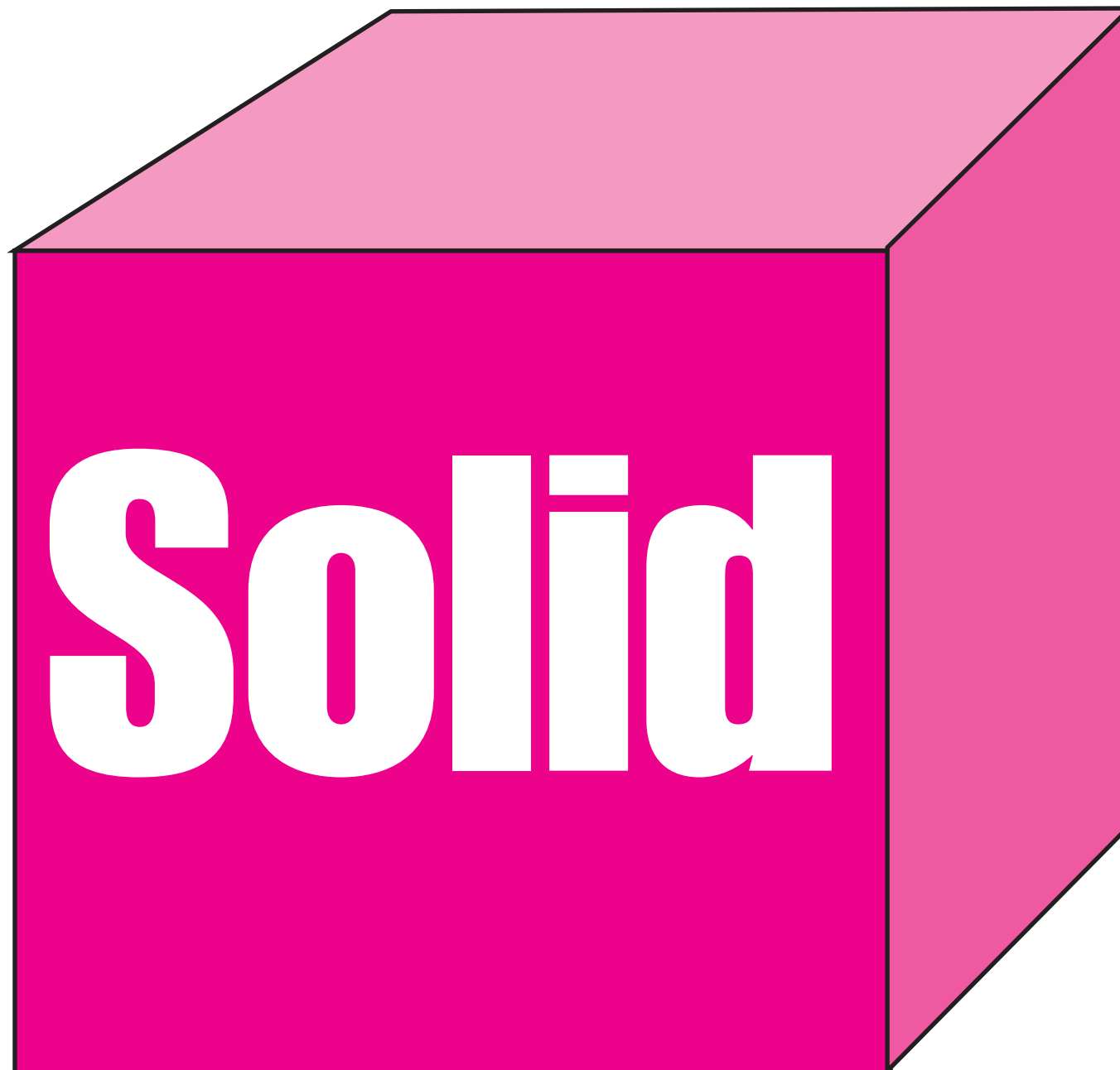




**Irreversible
change**









Question

Planning



**Step
1**

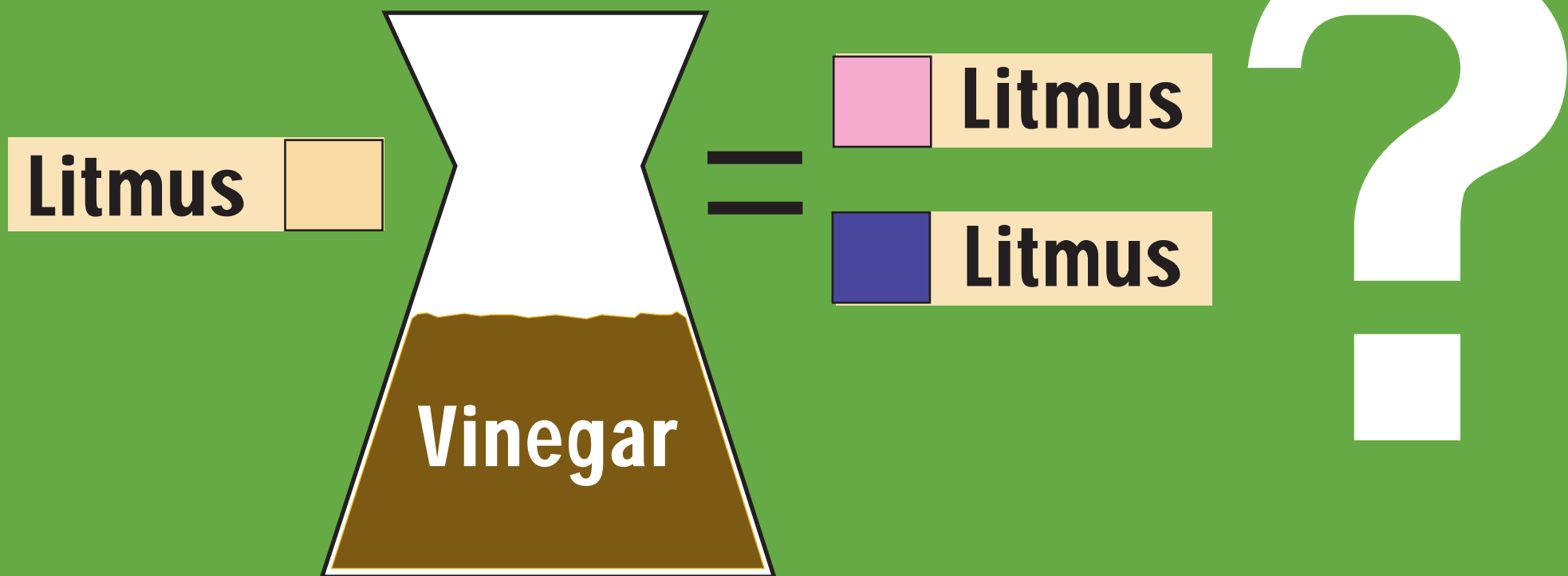


**Step
2**



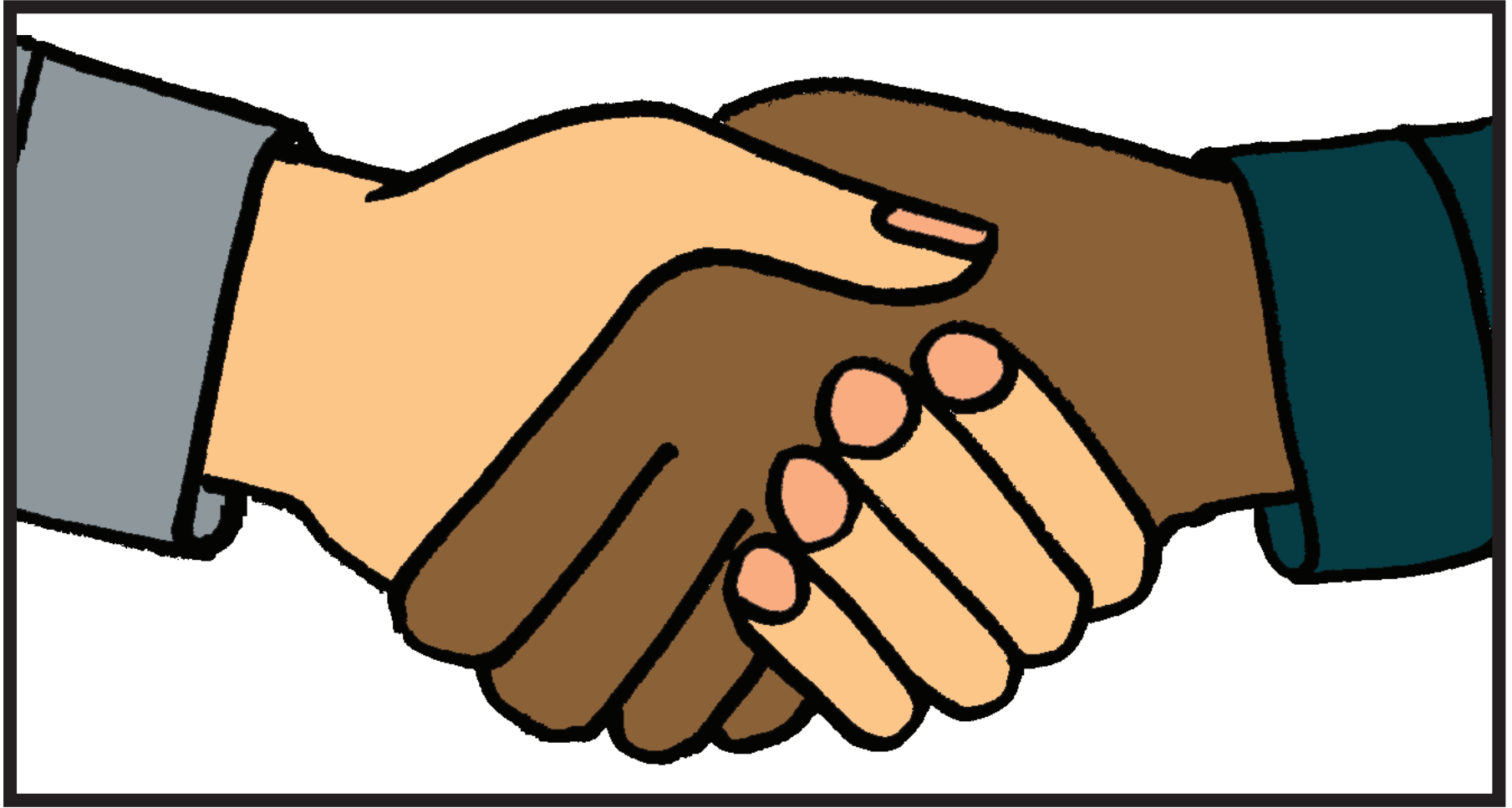
**Step
3**

Prediction



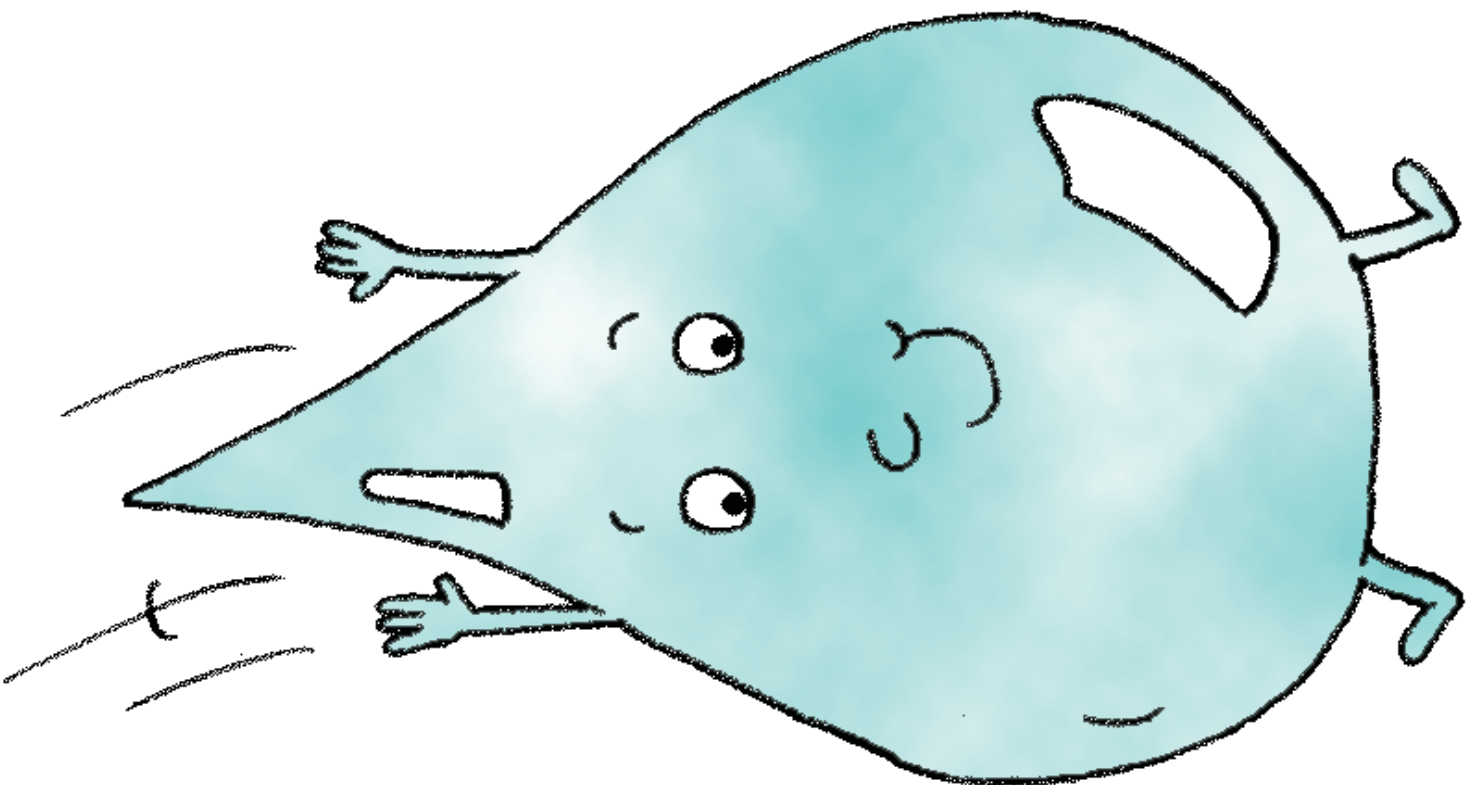
Results



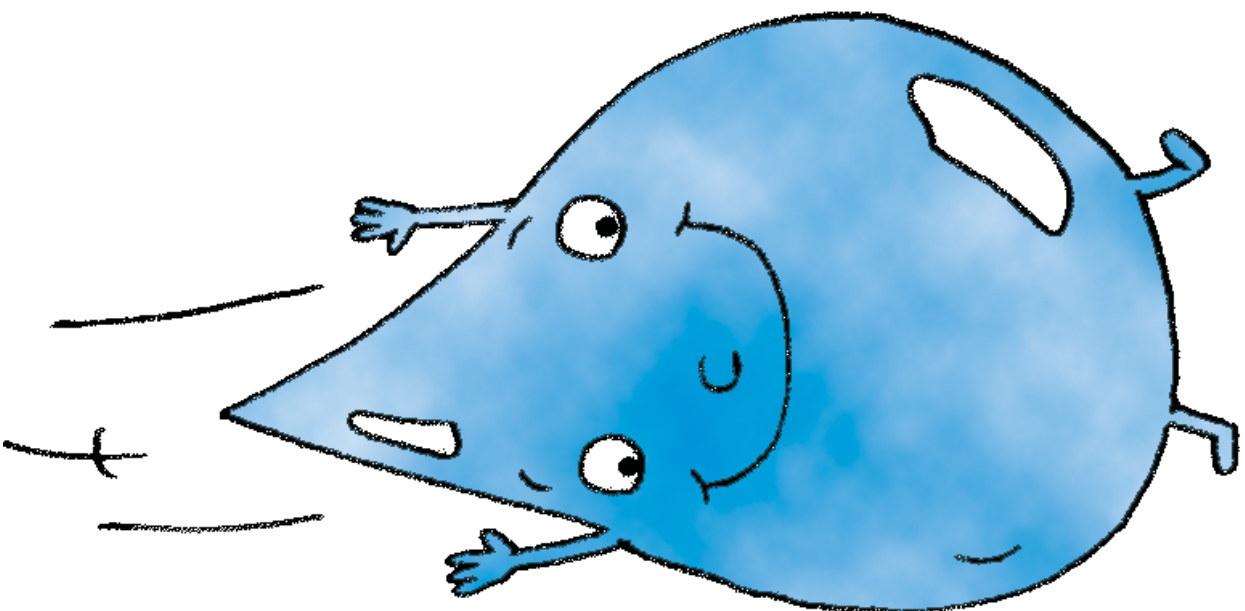


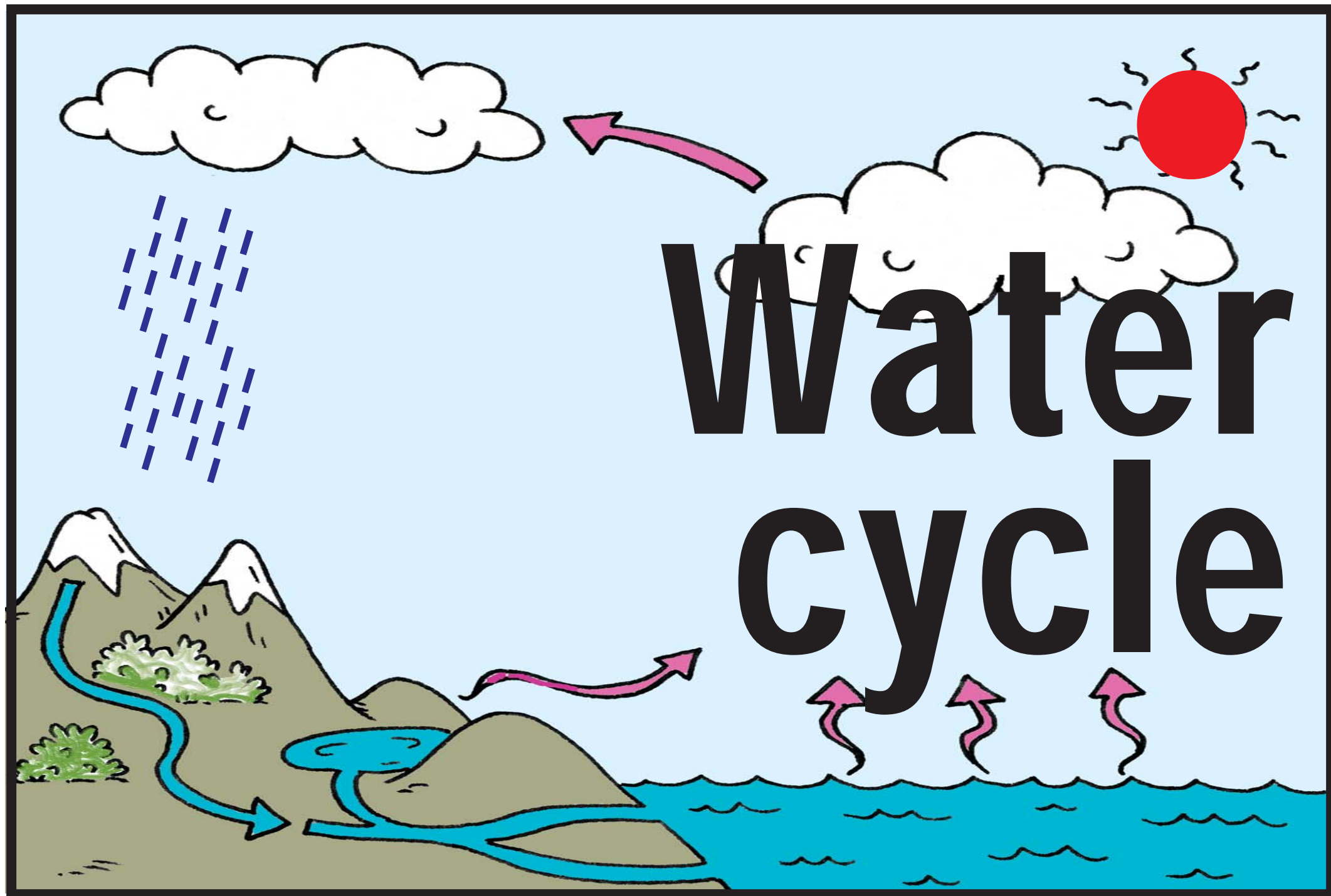
Conclusion

Drip



Drop





**The
following
week**





Tributary



Floodplain

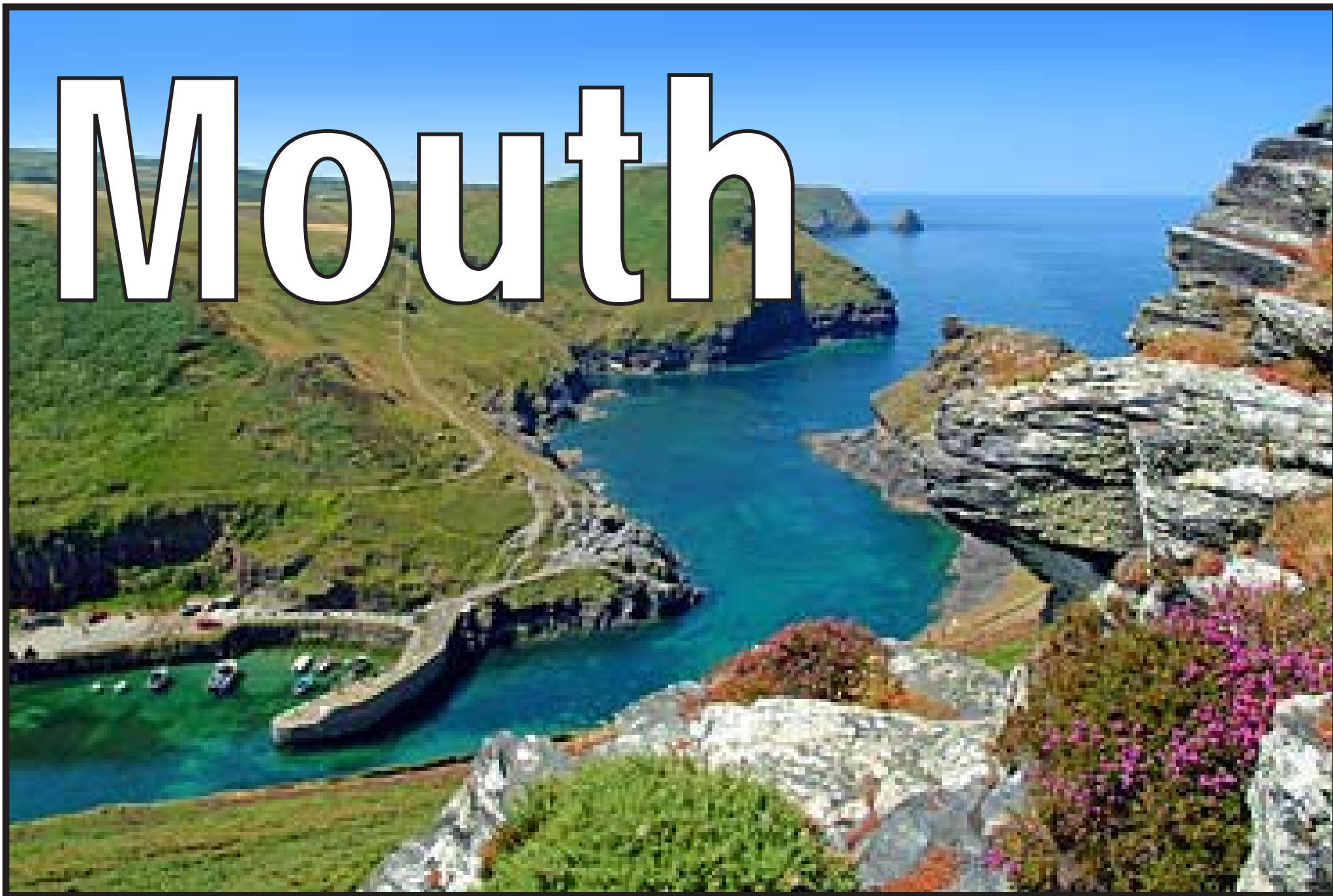
A large, powerful waterfall cascades down a mossy, green cliff face. The water is white and frothy as it falls, creating a thick mist at the base. A faint rainbow is visible in the mist on the right side of the waterfall. In the background, a green field stretches out to a body of water under a clear blue sky. A small wooden bridge is visible on the left side of the image, near the base of the waterfall.

Waterfall

Source



Mouth



**Auditions
this way**



Snow

Leopard